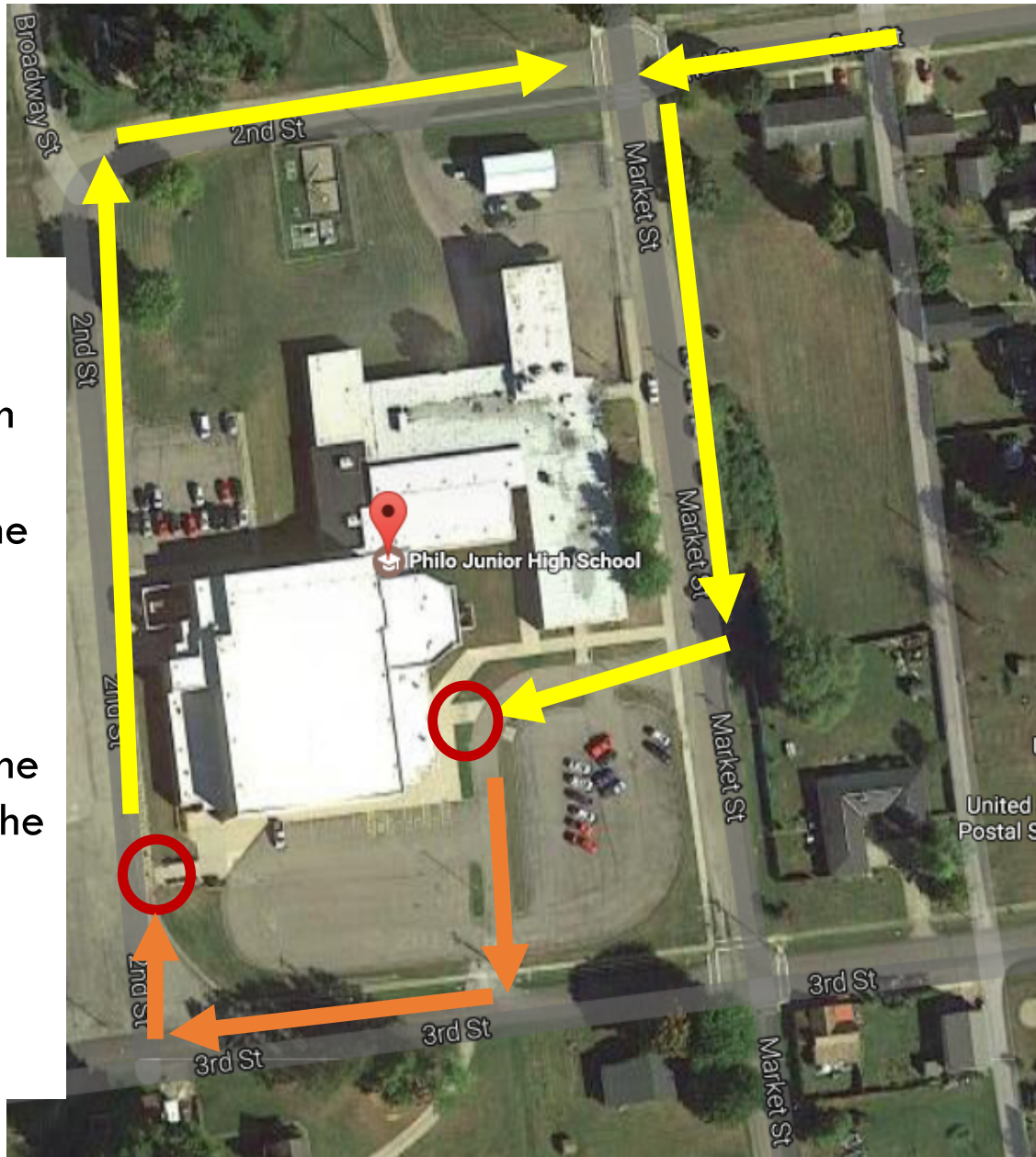


PROMENADE ROUTE



4. Vehicles will be valeted in a line behind the gym
5. Students will exit through the back of the gym & retrieve their vehicles.

PROCEDURE

1. Students will travel down 2nd Street before turning onto Market Street in front of the Junior High.
2. Students will pull their vehicles into the loop in front of the entrance to the gym & exit their vehicles.
3. Students will be announced inside as they walk across the gym.





PARKING

- All gravel lots will be open for parking as well as parking around the building.
- The side parking lot will be reserved for handicapped & elderly parking only.

SPECTATORS SHOULD ENTER PARKING AREAS FROM 3RD STREET TO AVOID PROMENADE ROUTE

